

17,834



Farmers Electric Cooperative

2000 I-30 E
Greenville, TX 75402

FILED FOR RECORD
at 1:00 o'clock P M

NOV 08 2022

BECKY LANDRUM
County Clerk, Hunt County, Tex.
By [Signature]

Thursday, October 20, 2022

Office of Hunt County Commissioners
PO BOX 1097
Greenville TX 75403

Farmers Electric Cooperative Member: JILL AINSWORTH
Service Order Number: 2022075352

Greetings:

Farmers Electric Cooperative, Inc. is requesting permission to construct electrical power distribution facilities which will cross County Road 3408 which is located 1970 ft west of FM 513 in Hunt County, Texas.

Site location map and construction sketches are enclosed. The construction sketch details the proposed work. All road crossings will have a minimum vertical clearance of 22 feet.

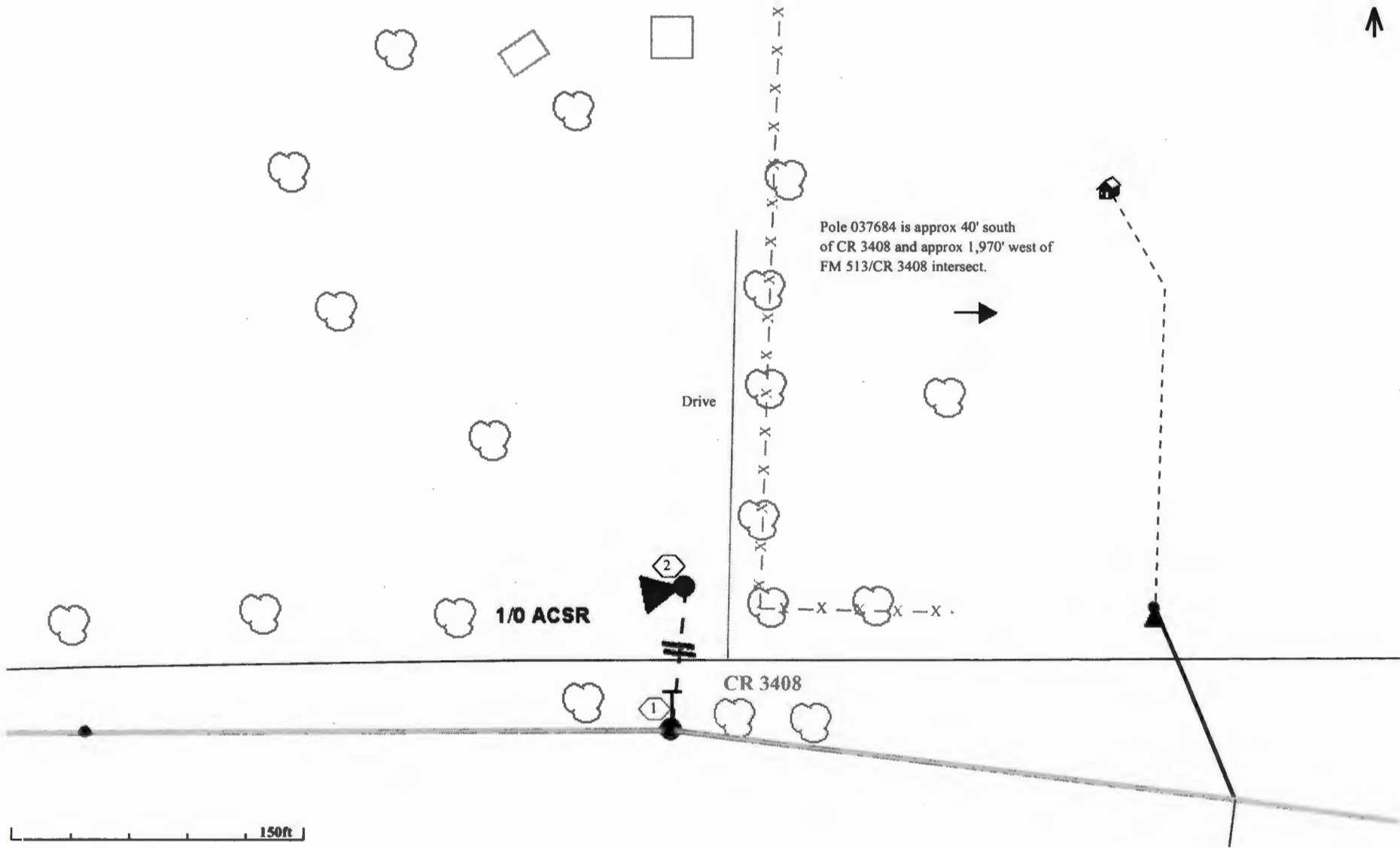
If you have any questions, please contact me at any time.

Sincerely,

Colton McDonald
Project Coordinator
cmcdonald@farmerselectric.coop
Phone 903-513-9024

Submitted by Brandon Darrow
bdarrow@farmerselectric.coop
Field Engineering Coordinator

Enclosures



Pole 037684 is approx 40' south of CR 3408 and approx 1,970' west of FM 513/CR 3408 intersect.

Drive

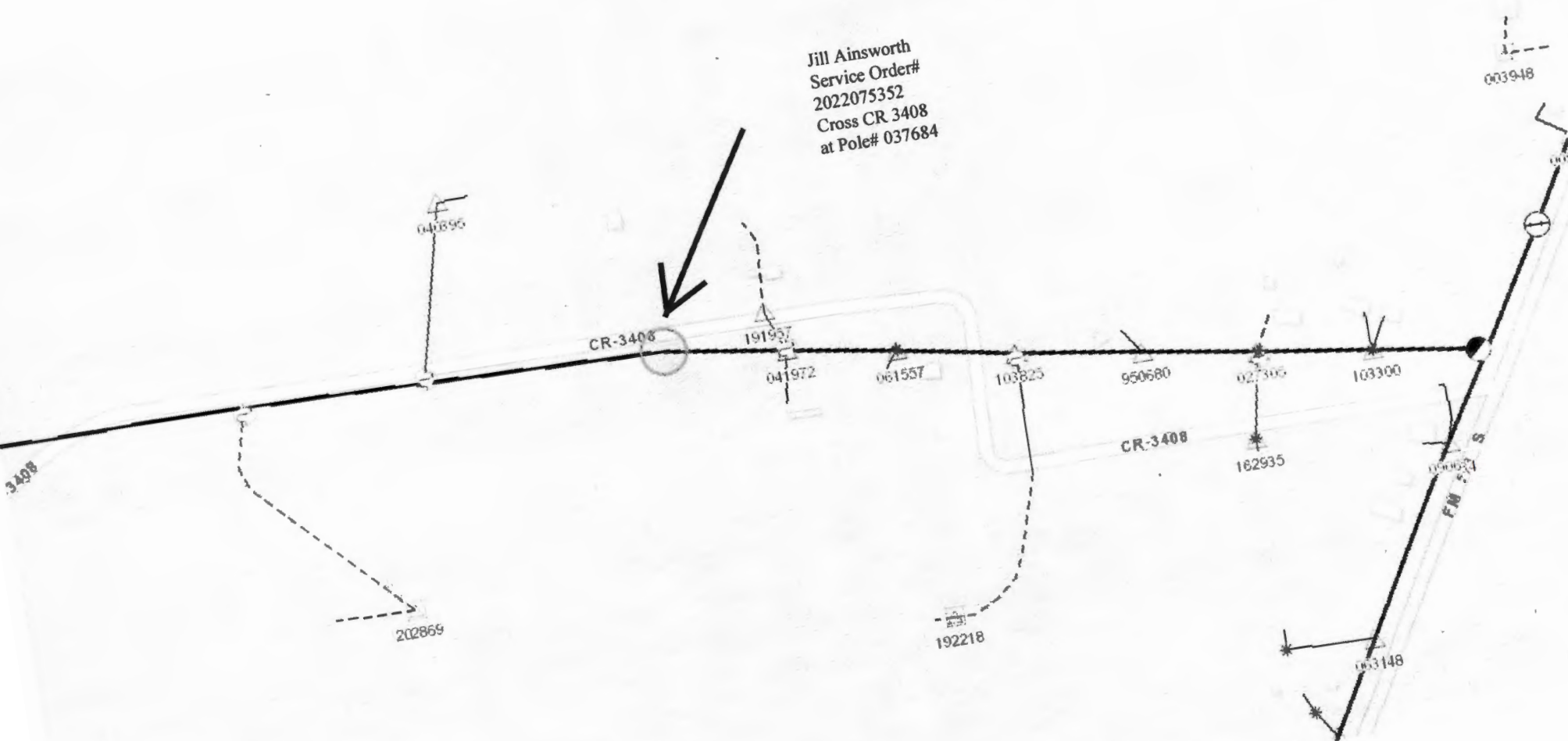
1/0 ACSR

CR 3408

150ft



Jill Ainsworth
Service Order#
2022075352
Cross CR 3408
at Pole# 037684



3408

CR-3408

CR-3408

FM 715

003948

040896

191937

041972

061557

103825

950680

027306

103300

202869

162935

192218

037684